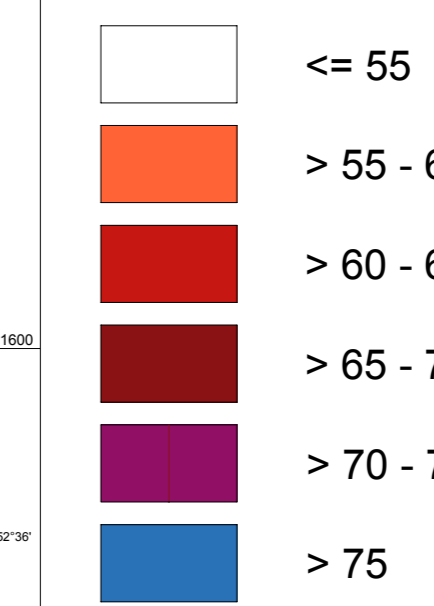


Strategic Noise Map Air Traffic LDEN (noise index day-evening-night)

L_DEN in dB(A)



1. The "Directive of the European Parliament and of the Council relating to the assessment and management of environmental noise" came into force on 18th February 2002. This requires the following actions:

- determining the load caused by environmental noise by means of noise maps and according to assessment methods to be used by all of the Member States
- adoption of action plans through the Member States based on the results of noise maps and aiming at preventing and reducing environmental noise where necessary and particularly in cases where exposure levels might have effects that are detrimental to health.

2. The following noise sources were examined:

- Road traffic (motor vehicles including buses)
- Streetcar traffic and above-ground subway traffic
- Industrial and commercial areas with plants complying with Annex I of Directive 96/61/EC
- Air traffic (Tegel Airport)

Railway traffic according to the Allgemeines Eisenbahngesetz (AEG, General Railroad Law). Included in the examination were further relevant main noise sources in the Brandenburg area adjoining the borders, which exceed the specified immission levels (excluding Schönefeld Airport).

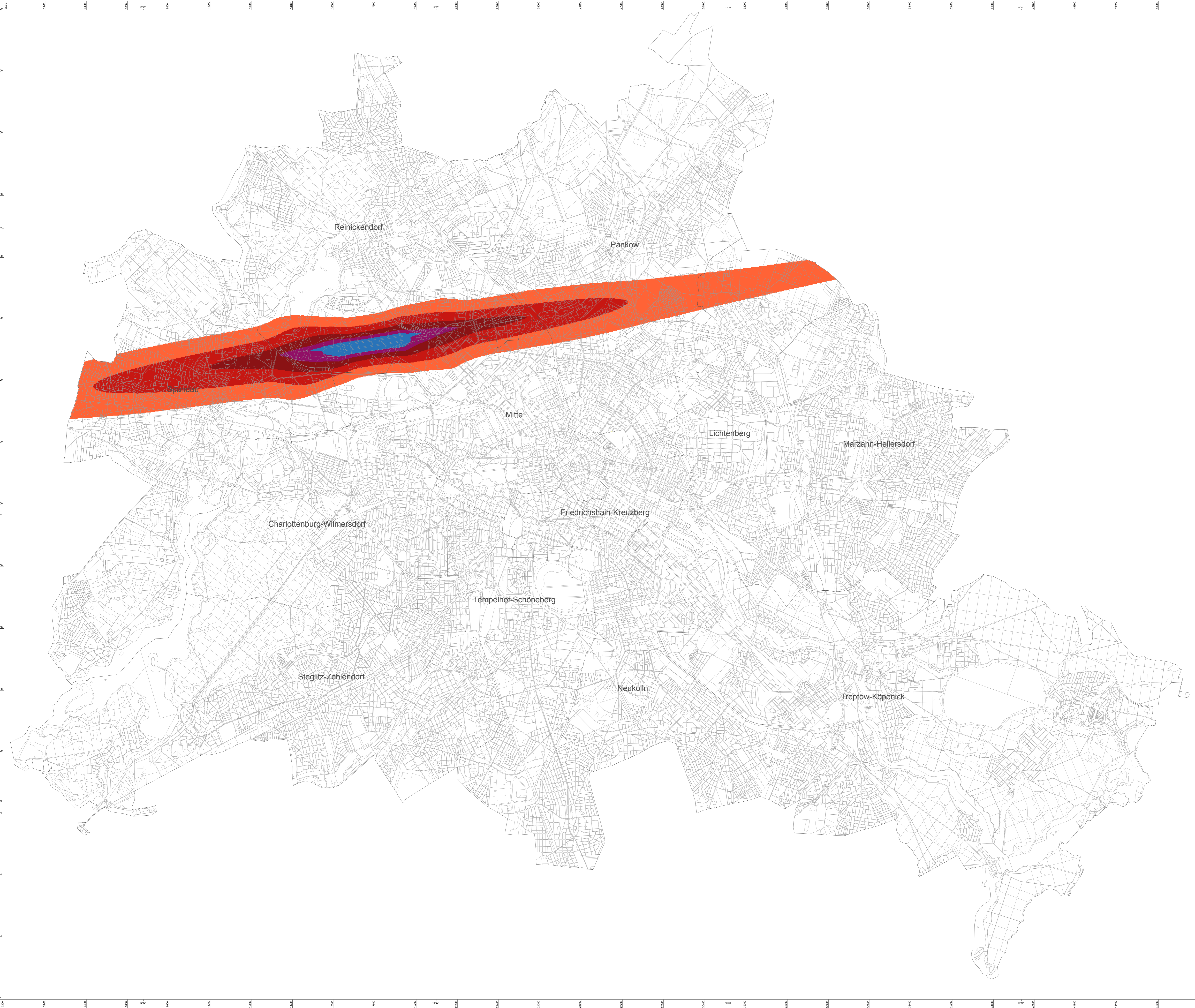
3. Noise maps must always be calculated. Calculations must comply with the preliminary EU-conforming calculation rules, which deviate from the Technical Codes that are binding according to national law in some aspects. Noise maps are to be reviewed and, if necessary, revised every five years after they have been drawn up.

4. As required in the "Directive on the Assessment and Management of Environmental Noise", strategic noise maps graphically represent the noise situation in the following isophone classes:

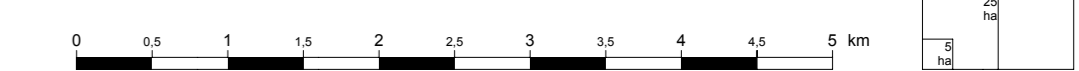
Representation of isophone classes according to the requirements of 34th BImSchV	
LDEN > 55 dB(A) up to 60 dB(A)	LNight > 50 dB(A) up to 55 dB(A)
LDEN > 60 dB(A) up to 65 dB(A)	LNight > 55 dB(A) up to 60 dB(A)
LDEN > 65 dB(A) up to 70 dB(A)	LNight > 60 dB(A) up to 65 dB(A)
LDEN > 70 dB(A) up to 75 dB(A)	LNight > 65 dB(A) up to 70 dB(A)
LDEN > 75 dB(A)	LNight > 70 dB(A)

5. The noise exposure is specified through the following variables:

- Tabular data about the estimated number of persons living in areas located within the isophone bands. Figures should be rounded up or down to the next hundredth place.
- Tabular lists about noise-exposed areas as well as the estimated number of dwellings, schools and hospitals in these areas for the following LDEN values: LDEN > 55 dB(A), LDEN > 65 dB(A), LDEN > 75 dB(A).



Scale: 1 : 50 000



Published by: **Senate Department for Urban Development in Berlin**

Unit Communication

Conception: III F 1 - Informationssystem Stadt und Umwelt, UmwelAtlas in Verbindung mit dem Referat Grundsatz- und Planungsangelegenheiten des Immissionsschutzes, Senatsverwaltung für Gesundheit, Umwelt und Verbraucherschutz

Data: III F 1, III D 13 SenGesUmw
Lärmkartierung nach Umgebungsgeräusrichtlinie Ballungsraum Berlin.
- Wöhrle Beratende Ingenieurgesellschaft Berlin GbR
- Wöhrle Beratende Ingenieurgesellschaft mbH
- S.S. Planungs- und Ingenieurgesellschaft mbH
- Wöhrle Messtechnik Software GmbH+Co. KG

Data Processing: - III F 1 unter Verwendung des Informationssystems Stadt und Umwelt (ISU) Berlin, - Wöhrle Beratende Ingenieurgesellschaft mbH+Co. KG
- Wöhrle Fastemmer

Basis Map: - Digitale Arbeitskarte des ISU, 1 : 5.000 (ISU5), Stand 30.08.2007

Data from: September 2007
This map is copyright protected. Reprinting or any other form of reproduction only with prior permission.

Internet Address: <http://www.stadtentwicklung.berlin.de>