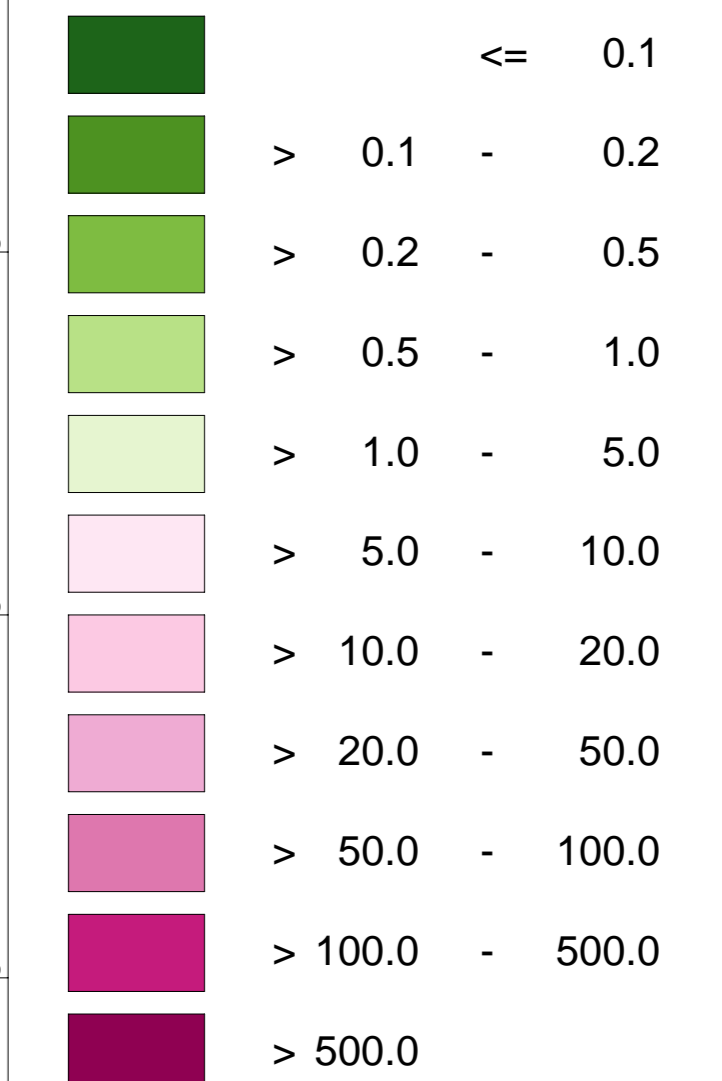
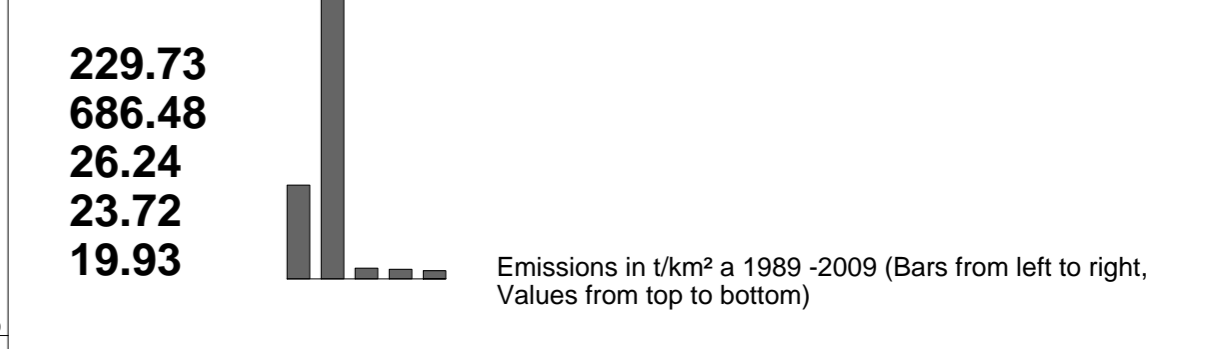


Long-Term Development of the Air-Quality of Nitrogen Oxides (NOx)

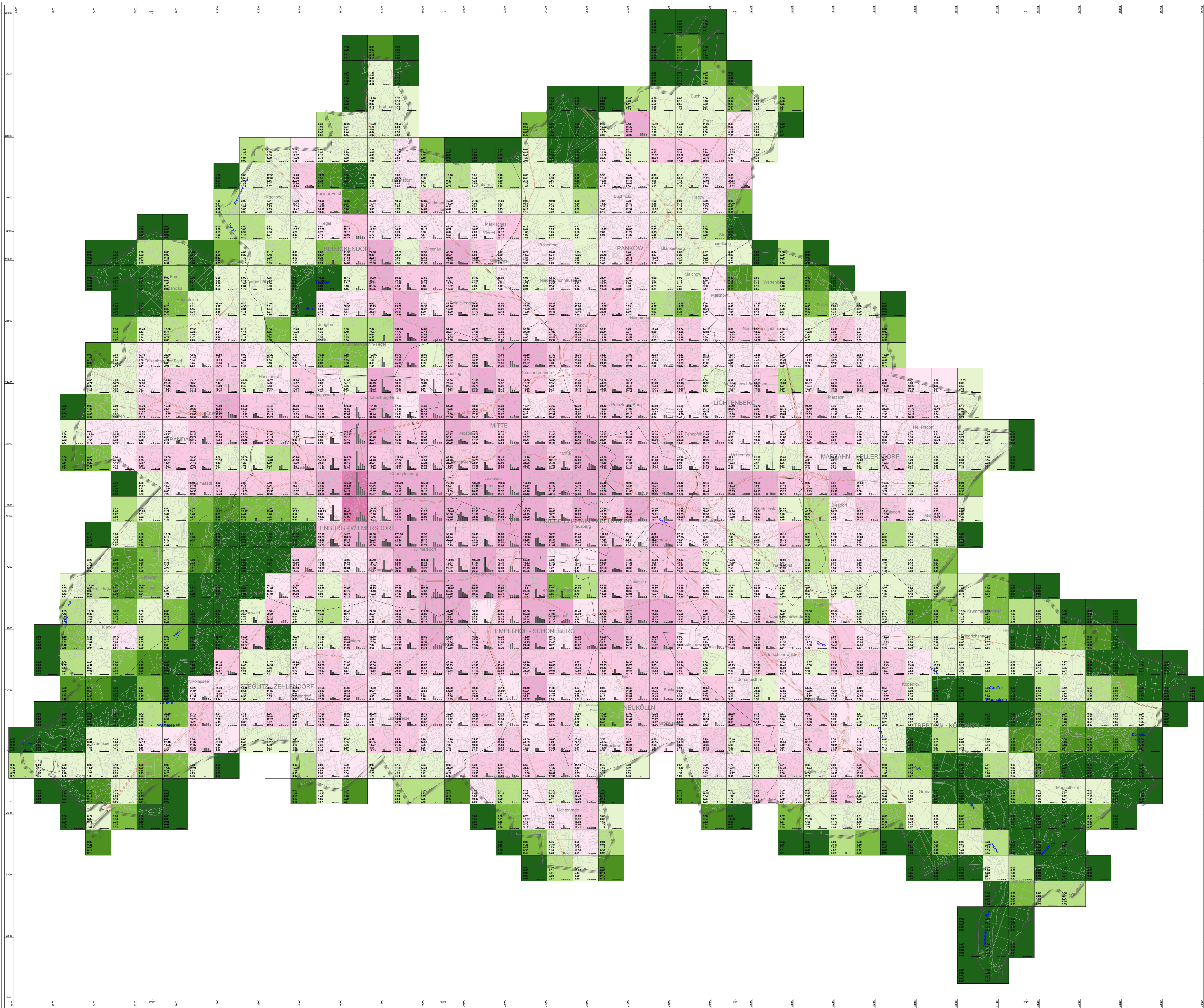
Emissions motor vehicle traffic 2009
total road network
(t/km² a)



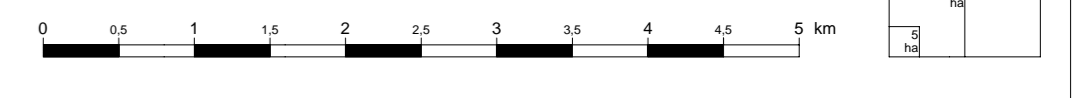
Development of emissions 1989 - 1994 - 2002 - 2005 - 2009:



Single emissions inform about the different polluter groups domestic fuel, industry and motor vehicle traffic, whereas the total emissions provide information about the sum of these emissions.



Scale: 1 : 50 000



Published by: **Senate Department of Urban Development:**
Communication

Conception: III F 1 Environmental Atlas in connection with SenGesUmV III D 2 (Air Quality Management)
 Data: Emission register domestic fuel, industry and motor vehicle-traffic for the years 1989, 1994, 2002, 2004/2005 and 2008/2009, Senate Department for Health, Environment and Consumer Protection - III D 24
 Map Construction: Janina Seemann, Cornelia Nitzsche - Geoinf. III F under application of the Information System Urban and Environment (ISU) Berlin
 Colour Concept: III F 1
 End of Work: July 2011
 Based on Map: Blockmap 1:5.000 (ISU 5), as of 31.12.2010
 This map is copyright protected. Reprinting or any other form of reproduction only with prior permission.
 Updated Edition 2011
 Internet-Address: <http://www.stadtenwicklung.berlin.de>