

## ANNOUNCEMENT

open two-phase art competition

### **Art in Architecture (Percent-for-Art)**

#### **Kunst am Bau**

**Anna-Freud-Schule (Oberstufenzentrum für Sozialwesen), Halemweg 22, 13627 Berlin**

The state of Berlin, represented by the Senate Department for Culture and Social Cohesion, is announcing an open two-phase art-in-architecture competition for professional visual artists and groups of artists for the new building of the Anna Freud School (Oberstufenzentrum für Sozialwesen). A budget of up to 302,500.00 euros incl. VAT is available for the realisation of the artwork including all costs for fees, material and production costs including all ancillary costs.



New OSZ Sozialwesen Anna-Freud-Schule, exterior perspective © NAK Architekten

**Awarding Authority:** State of Berlin, represented by the Senate Department for Culture and Social Cohesion in liaison with the Senate Department for Urban Development, Building and Housing, the Senate Department for Education, Youth and Family and the Anna-Freud-Schule OSZ Sozialwesen

**Competition management:** Dr. Ewa Gossart, Senate Department for Culture and Social Cohesion

**Competition administration and support:** Gabriele Karau, kk-archpro

## **Type of competition procedure**

The competition is an open, two-phase art competition for professional visual artists and groups of artist. The scope of admission is unrestricted.

Participation will be conducted exclusively via the online competition platform <https://ovf.wettbewerbe-aktuell.de/de/wettbewerb-42624> from September 9, 2024.

In the first phase, participants are asked to develop basic artistic solutions in the form of an idea sketch with conceptual considerations for the new OSZ Sozialwesen Anna-Freud-Schule building. The jury will select up to 12 concepts for the 2nd phase, in which a detailed elaboration of the idea sketch is expected. The jury will judge in both phases in the same composition.

The competition procedure is anonymous.

The competition language is German. The competition documents will only be made available digitally on the competition platform in German. All documents of the participating artists must also be written and submitted in German. Documents in other languages will be excluded. The forms specified in the call for entries must be used for the submission of the required services.

The colloquium of the 2nd phase of the competition will also be held in German.

## **Principles and guidelines of the competition procedure**

The competition procedure is organised in accordance with the *Richtlinie für Planungswettbewerbe* (RPW 2013), insofar as these is applicable to art competitions, and follows the *Leitfaden Kunst am Bau und Kunst im Stadtraum für das Land Berlin* (2019).

The participating artists and groups of artists are asked to submit a work that is specifically conceived for this competition and the competition task on the basis of their individual artistic work. Competition entries that are published before or during the duration of the procedure violate the anonymity required in Section 1 (4) and Section 6 (2) of the RPW 2013 and will not be accepted for evaluation by the jury.

## **Eligibility to participate**

Only natural persons who are professionally active as visual artists and groups of artists (working groups) are eligible to participate in the competition. Proof of professional artistic activity must be provided by a corresponding degree in fine arts or in one of the fine arts at an art academy or similar and/or by a CV with a list of projects/exhibitions and/or by membership of an artistic professional association.

Eligibility to participate must be checked independently (RPW 2013, Section 4 (1)). Further commissioning is subject to the condition that the participants fulfil the eligibility requirements. Eligibility to participate will be checked after the end of the 1st competition phase. Participants who do not fulfil the eligibility requirements will be excluded from participation in the 2nd competition phase. Even after the 2nd competition phase the awarding authority reserves the right to carry out a final review of eligibility to participate.

Groups of artists count as one participant in the competition. Each member of a group must be eligible to participate. Groups of artists must appoint an authorised representative. In the event of a commission resulting from the competition, the members of an artist group undertake to maintain it in the same composition until the contract has been completed.

Legal entities are not eligible to participate.

The participation of individual members in more than one artist group is not permitted and will result in the exclusion of all work affected.

Excluded from participation in the art competition are persons who were directly involved in the preparation of the competition documents and the call for entries, members of the Beratungsausschuss Kunst (BAK) and all persons involved in the art competition as members of the jury and as experts or in the preliminary examination (Section 4 (2) RPW 2013).

All participants will be treated equally when entering the competition and during the procedure. The same conditions and deadlines apply to all participants. They will be sent the same information at the same time or made available via the online competition platform.

### **Purpose and aim**

The Anna-Freud-Schule (Oberstufenzentrum für Sozialwesen) is a general education and vocational school with a focus on psychology and education. It makes an important contribution to the training of specialists for the socio-pedagogical labour market. Study, vocational and life skills are taught in equal measure. The two profile-building subjects of education and psychology are of particular importance.

The demand for training places has risen continuously in recent years. According to the school development plan, the number of places at the OSZ Sozialwesen is therefore to be permanently increased by 250 to 1,350 student places. To this end, a new school building with modern specialised rooms for the training content on an area of 8,800 m<sup>2</sup> and a triple sports hall with spectator facilities (for guest teams) with a usable area of approx. 1,400 m<sup>2</sup> will be built at the Halemweg 24 site in the Charlottenburg-Wilmersdorf district of Berlin. The new building, designed by NAK Architekten (Numrich Albrecht Klumpp Gesellschaft von Architekten mbH), is designed for a total of 1,350 pupils and around 160 teachers and administrative staff. The outdoor facilities were planned by Base Landschaftsarchitekten Part GmbB.

The State of Berlin's Art in Architecture programme is an integral part of public building culture. In connection with the OSZ AFS construction project, the state of Berlin, represented by the Senate Department for Culture and Social Cohesion (SenKultGZ), in coordination with the Senate Department for Urban Development, Building and Housing (SenStadt), the Senate Department for Education, Youth and Family (SenBJF) and the Anna-Freud-Schule (OSZ Sozialwesen), is organising an open two-phase art competition.

The aim of the art competition is to develop an independent artistic contribution for the new OSZ AFS building that is specially conceived for this task and location. This should create an identity-forming reference to the location and its spatial, architectural and social situation and impress with its artistic quality and expressiveness.

## Task of the art competition

The task of the competition is to develop art for the new building of the Anna-Freud-Schule (OSZ Sozialwesen) that establishes a connection to the location, its architecture and spatial context. It should also address its use as a place of teaching and exchange, in line with the mission statement of the Anna-Freud-Schule.

An independent contribution is expected that is convincing in terms of artistic quality and expressiveness and that is developed specifically for this competition task on the basis of the individual artistic work.

## Areas of the art competition

Several artistic work areas of varying spatial quality are available for the art in the new building, in the inner and atriums and in the outdoor space. It is up to the participants to select one or more artistic work areas or one or more art locations in these areas for their art. The participants are also free to choose the focus within a concept or within an artistic work area. Only one idea sketch without variants may be submitted. Submissions with variants will be excluded from the assessment.

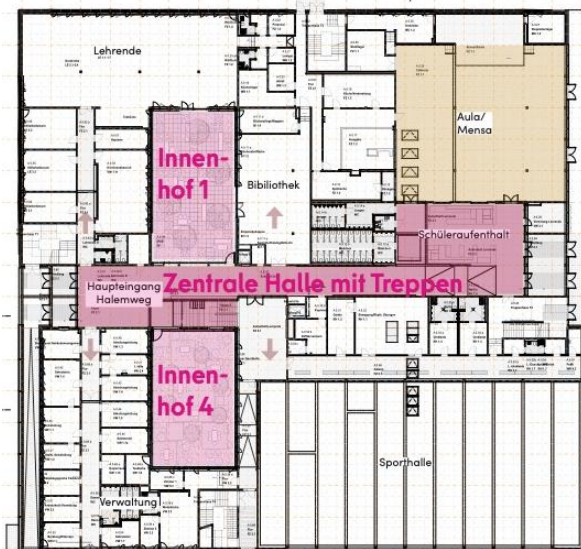
### Artistic work areas in the interior:

1. central hall on the ground floor, 1st floor, 2nd floor including foyer stairs

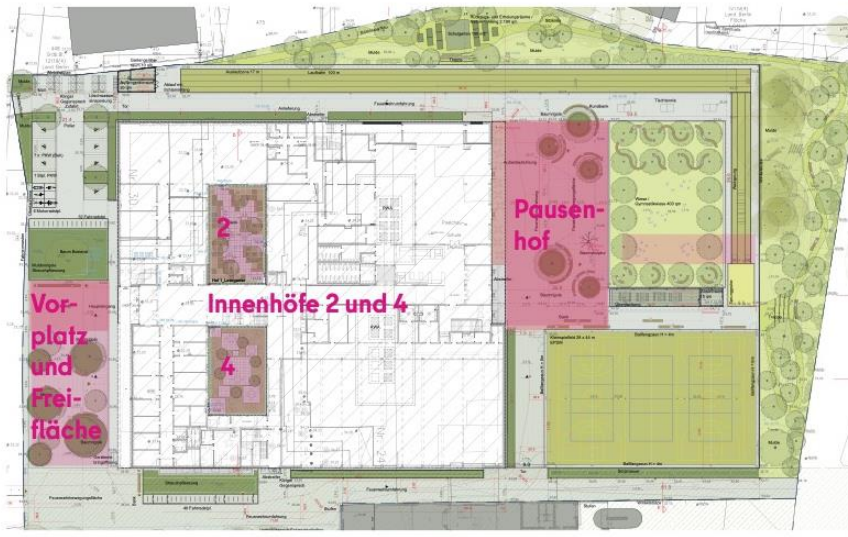
### Inner courtyards and atriums in the building:

2. ground floor - inner courtyards 1 and 4
3. 1st floor - atrium 2 and 3

### Artistic work areas in the outdoor area:



4. forecourt and adjacent outdoor area to the south up to the fire brigade movement area
5. schoolyard



© NAK Architekten, work areas: Central hall with foyer stairs (ground floor, 1st floor, 2nd floor), inner courtyard 1 and 4, atrium 2 and 3

Outdoor work areas: forecourt with southern open space, courtyards 2 and 4, schoolyard



Perspective of the central hall with foyer staircase to the 1st floor  
© NAK Architekten

## **Budget for realisation**

A total of up to 302,500.00 euros including VAT is available for the realisation of the art in architecture for the OSZ Sozialwesen Anna-Freud-Schule for fees, direction, material, production and installation costs including all ancillary costs.

## **Allowance for expenses**

Participants in the first phase of the competition will not receive an expense allowance. Each participant (up to 12 individual applications or groups of artists) in the second phase of the competition will receive an expense allowance of EUR 3,200.00 including VAT, provided that a work that fulfils the conditions of the competition is submitted on time.

## **Prizes and purchases**

Prizes and purchases are not awarded.

## **Jury**

### *Specialist judges*

- Andrea Böning, artist
- Sven Kalden, artist
- Ulrike Mohr, artist
- Oliver Störmer, artist

### *Experts judges*

- Grant Kelly, NAK Architekten GmbH
- Anne Priebisch, OSZ Sozialwesen Anna-Freud-Schule
- Andrea Schich, Senate Department for Urban Development, Building and Housing

## **Judging criteria in the art competition**

The final and binding judgement of the idea sketch is reserved for the jury. The assessment criteria are derived from the competition task, the requirements described in the competition document and the objectives of the organiser.

Fulfilment of the formal competition requirements: completeness of the competition documents, fulfilment of the specifications, consistency of the documents, comprehensibility of the information.

Fulfilment of the competition task: artistic idea / guiding principle, creative implementation and artistic quality, spatial integration and sustainability in the effect, functionality, technical feasibility (2nd phase), adherence to the budget (2nd phase), economic efficiency in production and operation (2nd phase).

## **Timetable**

### Art competition 1st phase:

Mon, 09/09/2024: Publication of the announcement and issue of the competition documents

Wed., 25.09.2024: Deadline for submission of written queries regarding the competition

Wed.; 02.10.2024: Answering the queries

Mon, 04.11.2024: Deadline for submission of the idea sketch

Tue/Mi, 10/11/12/2024: Jury meeting (two-day)

### Art competition 2nd phase

16.12.2024: Notification of up to 12 participants for phase 2

18.12.2024: Activation of link for processing phase 2

Tue, 14 Jan. 2025: Site visit (optional)

Thu, 16.01.2025: Colloquium as Q&A session, (obligatory, probably online)

Fri, 31.01.2025: Deadline for submission of written queries

Tue, 11/02/2025: Answering of written queries

Wed., 02.04.2025: Deadline for submission of competition work

Wed., 14.05.2025: Meeting of the jury for phase 2

Expected from 04/06/2025 exhibition of the competition works 2. Phase (online)

From June 2025 Elaboration/planning of the selected project and realisation by the end of 2025 if possible

### **NOTE ON PARTICIPATION**

The invitation to tender with all documents will be available for download on the Internet at <https://ovf.wettbewerbe-aktuell.de/de/wettbewerb-42624> from 9 September 2024. Competition documents can only be accessed in this way.

They will not be sent by post.

Free registration at wettbewerbe aktuell is required to access the competition documents and participate in the competition.

Technical assistance with registration and participation in the competition can be obtained directly via the competition platform, Mrs Stöcks, Tel. 0049 (0) 761 - 774 5533 from Mon-Thu 7:30-15:00 and Fri 7:30-12:30 or by e-mail to [stoecks@wettbewerbe-aktuell.de](mailto:stoecks@wettbewerbe-aktuell.de).

### **Data protection**

By participating or contributing to the competition, each participant consents to his/her personal data being stored by the organiser in the form of an automated file in connection with the above-mentioned competition.

In accordance with Art. 6 para. 1 lit. a) of the EU GDPR, the consent of the participants is required, as there is no specific legal basis for data processing. The data is stored for a limited period of time in accordance with the relevant statutory provisions. Personal data will be deleted when it is no longer necessary for the purposes for which it was collected or otherwise processed (completion of the competition procedure), the underlying consent is revoked or an objection to the processing is raised.

### **Responsible body**

The controller within the meaning of the General Data Protection Regulation and other national data protection laws of the member states as well as other data protection regulations and at the same time the competition controller is

Senate Department for Culture and Social Cohesion

Address: Brunnenstraße 188–190, 10119 Berlin

The data protection officer of the controller is: Dirk Kroegel

E-Mail: DSB@kultur.berlin.de

### **Address:**

Senate Department for Culture and Social Cohesion

Data Protection Officer

Brunnenstraße 188–190

10119 Berlin