

CIVIL PROTECTION LIGHTHOUSES

Civil protection lighthouses (Kat-L) and civil protection information points (Kat-I) are contact points for the population in crisis situations. They can be used to report an emergency in the event of a failure of the means of communication, to receive current information on the situation and to get in touch with other citizens' exchange.

Kat-L and Kat-I are **ONLY** set up in the event of a long-lasting, widespread interruption in the power supply.

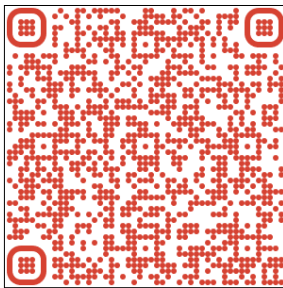
EMERGENCY PREPARATION

You can find important information on personal emergency preparedness and stockpiling on the Internet at the Federal Office for Civil Protection and Disaster Preparedness (BBK) at bbk.bund.de and in brochures that you can obtain from the Reinickendorf town hall. The brochures are available in several languages.



ADDITIONAL INFORMATION

You can find more information about civil protection in the Reinickendorf district on the Internet. erhalten Sie im Internet.



Katastrophenschutz in Reinickendorf

WARNING TO THE POPULATION

In Berlin, the smartphone apps 'NINA' or 'KATWARN' are recommended as personal information options in dangerous situations. There, you can select areas and receive messages about them in the event of danger or important information.



NINA warns you of dangers such as floods and other so-called major disasters.
www.bbk.bund.de/nina



KATWARN warns and informs about dangerous situations. It also gives recommendations for action via SMS and e-mail.
www.katwarn.de



Official alerts can also be sent directly to your mobile phone with the new **CELL BROADCAST** technology introduced in February 2023. Please note that the mobile phone network and the Internet are only available for a short time in the event of a power failure!

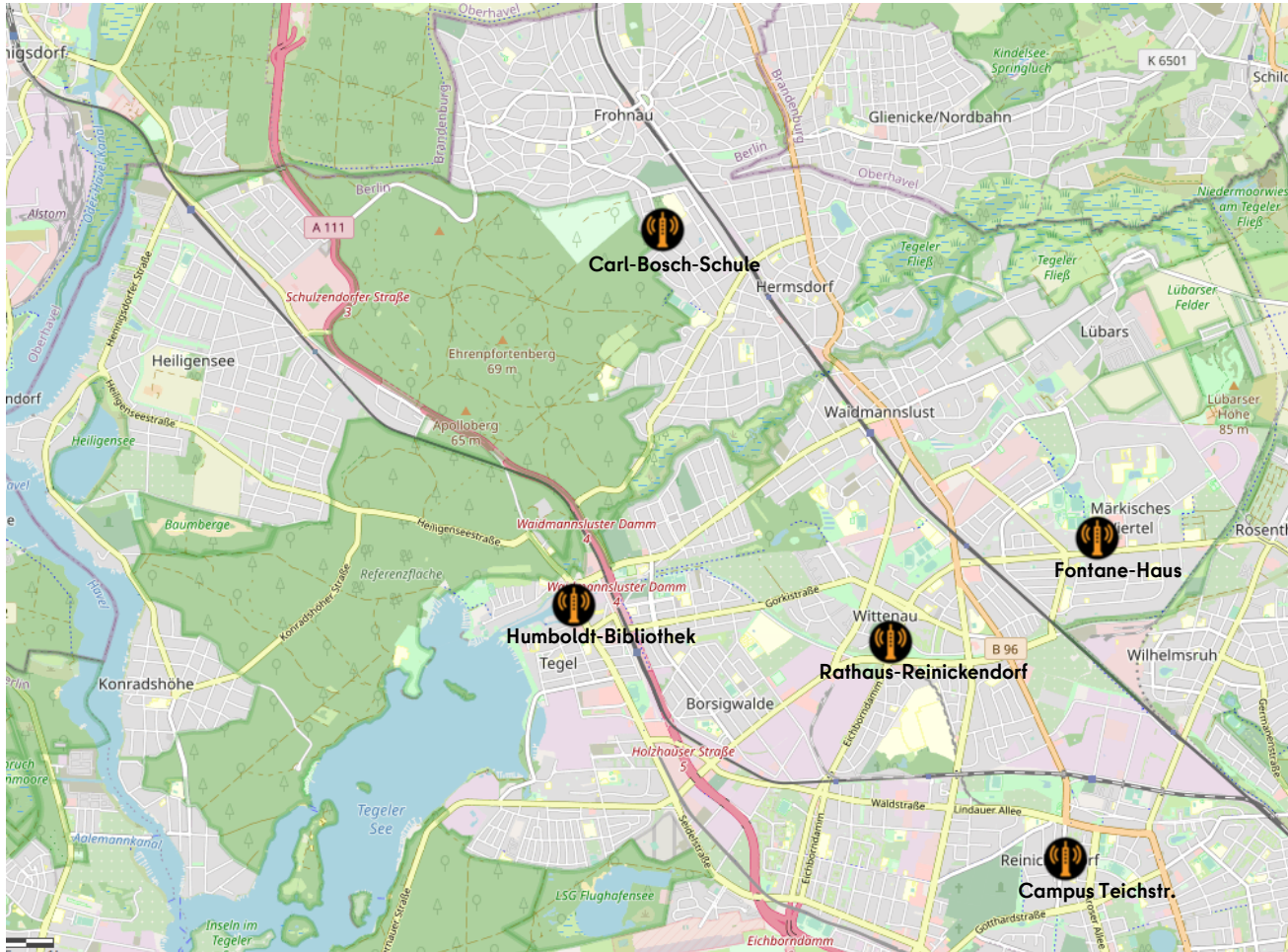
In addition, the Berlin fire brigade is again setting up **WARNING SIRENs** in all districts.

WHAT TO DO IN THE EVENT
**OF A POWER
FAILURE**

IN REINICKENDORF?



LOCATIONS OF THE CIVIL PROTECTION LIGHTHOUSES (KAT-L)



- **Rathaus Reinickendorf**, Eichborndamm 215, 13437 Berlin
- **Bürgeramt Teichstraße 65**, 13407 Berlin
- **Humboldt-Bibliothek**, Karolinenstr. 19, 13507 Berlin
- **Carl-Bosch-Schule**, Frohnauer Str. 74, 13467 Berlin
- **Fontane-Haus**, Königshorster Str. 6, 13439 Berlin

In addition to the district office's emergency power-supplied disaster control lighthouses (Kat-L), disaster control information points (Kat-I) are set up at other locations in the event of an emergency. An overview of all locations is available on the Internet.

Kat-L und Kat-I Standorte



EMERGENCY WATER WELL



EMERGENCY WATER WELL



In order to ensure the vital water supply even in an emergency, 153 emergency water wells are currently in operation in Reinickendorf. The fountains are regularly maintained by the Roads and Parks Department and checked by the Health Department.

An emergency water well can supply 1,500 to 2,500 people in the event of a disaster or defence.

The supply of the population in the district is thus guaranteed.

A complete list of the Reinickendorf emergency water wells is available for download on our website, sorted by postal codes.



District Office Reinickendorf | civil protection

Eichborndamm 215, 13437 Berlin

E-Mail: katschutz@reinickendorf.berlin.de